



# GAT MONTHLY MEMBERSHIP PROGRESS REPORT

Results as of: 3/31/2023

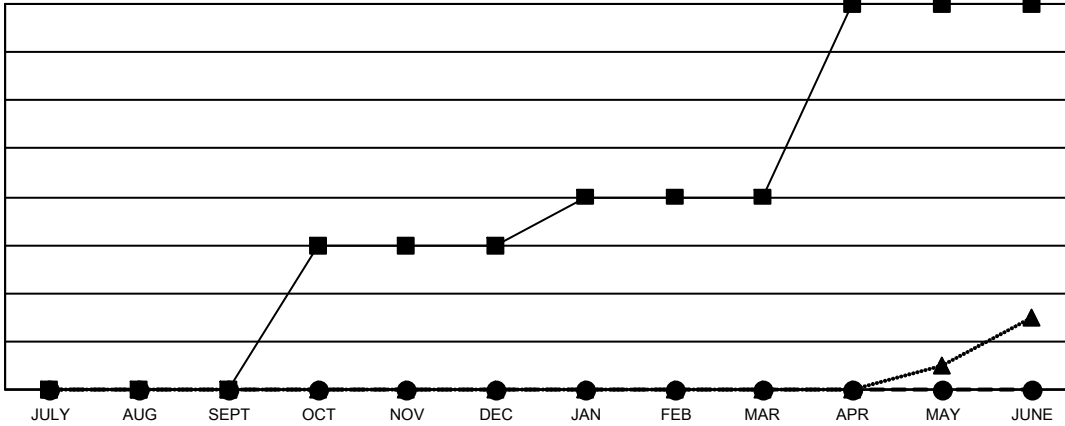
Multiple District 11

LOCATION: MICHIGAN

Clubs			
RESULTS FOR 2022-2023			
QUARTER	NEW CLUB GOAL	NEW CLUBS	DROPPED CLUBS
JULY/AUG/SEPT	0	0	2
OCT/NOV/DEC	6	0	5
JAN/FEB/MAR	2	0	6
APR/MAY/JUNE	8	0	0

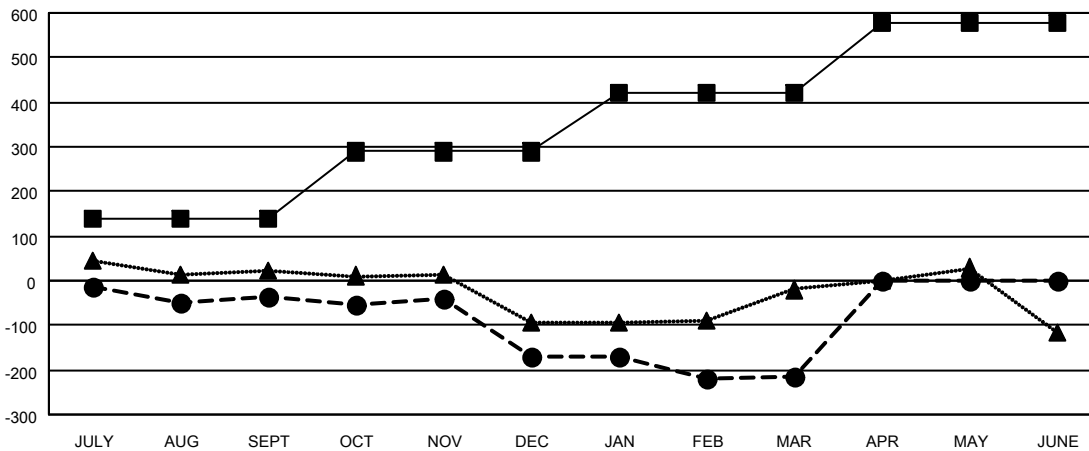
Members			
RESULTS FOR 2022-2023			
QUARTER	MEMBER GROWTH NET GOAL	MEMBER GROWTH ACTUAL	DROPPED MEMBERS ACTUAL (including transfers)
JULY/AUG/SEPT	137	178	194
OCT/NOV/DEC	152	234	347
JAN/FEB/MAR	132	226	231
APR/MAY/JUNE	158	0	0

GOALS AND ACTUAL NEW CLUBS CUMULATIVE



- CURRENT YEAR GOALS FOR NEW CLUBS
- CURRENT YEAR ACTUAL NEW CLUBS
- ▲- LAST YEAR ACTUAL NEW CLUBS

GOALS AND ACTUAL MEMBERS CUMULATIVE



- MEMBER GROWTH NET GOAL
- MEMBER GROWTH ACTUAL
- ▲- LAST YEAR MEMBERSHIP ACTUAL

DROPPED CLUBS: 13	
<b>DROPPED MEMBERS</b>	
DECEASED	125
CLUB CANCELLED	53
OTHER	594
<b>TOTAL</b>	<b>772</b>

180 CLUBS OF 367 ADDED 1 OR MORE NEW MEMBERS

[CLICK HERE FOR CUMULATIVE MEMBERSHIP DATA](#)

GENDER DISTRIBUTION	
MALE	6,067 (64.75%)
FEMALE	3,298 (35.20%)
NON BINARY	1 (0.01%)
PREFER NOT TO ANSWER	4 (0.04%)
<b>TOTAL FAMILY UNIT MEMBERS</b>	<b>1,876</b>
<b>FAMILY MEMBERS PAYING HALF DUES</b>	<b>960</b>